

AM70 AC Flexible quiet motor



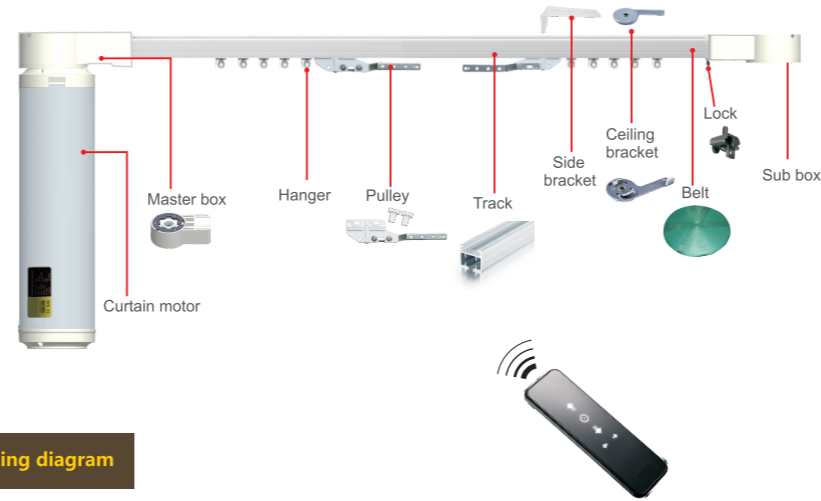
Functions and features

- Super silent design**
bring you similar feeling that take the quality elevator, smooth start and smooth stop, the curtain runs more smoothly and quiet.
- Auto set limit journey**
Auto set and remember the best stops position to protect the parts being noisy or damaged by the crash, longer the system life, able to keep the limits journey when the power off.
- Light-touch function**
Move the curtain fabric about 5CM in a way when the motor power on, the curtain would open or close automatically.
- Limit correction**
the curtain motor keep the position after fabric round as its limit position, then curtain fabric stop at a nicer position.
- Manually operation**
Able to manually open or close the curtain when the power off.
- Multiple connections**
Standard interface support multiple motors connection, and can be controlled by external switch or central control.
- Stop on block**
The curtain stop automatically when its pulleys meet resistance to protect the whole system not damaged.
- Adjustable speed**
Able to adjust motor speed according to the requirements.
- Various control modes**
With option of RF, Wiring, RS232/485 etc control depends on the various applications.
- Limit position fine tuning**
Intermediate limit can be adjusted
- Gear boxes on track two sides with rolling bearing structure**, to ensure the balance and the low moving noise.
- End gearboxes with double bearing** to make the system in balance and smooth run.
- Hidden structure for ceiling bracket**, with material 304 stainless steel.
- Motor can be installed on the top or down** according to the application.

Parameters

Model No.	Rated torque	Speed	Motor size	Rated voltage	Rated power	IP level
AM70-2/80-EM-P	2N.m	12cm/s	φ72.5×281.5(L)mm	AC100-240V 50/60Hz	72W	IP20

System and components



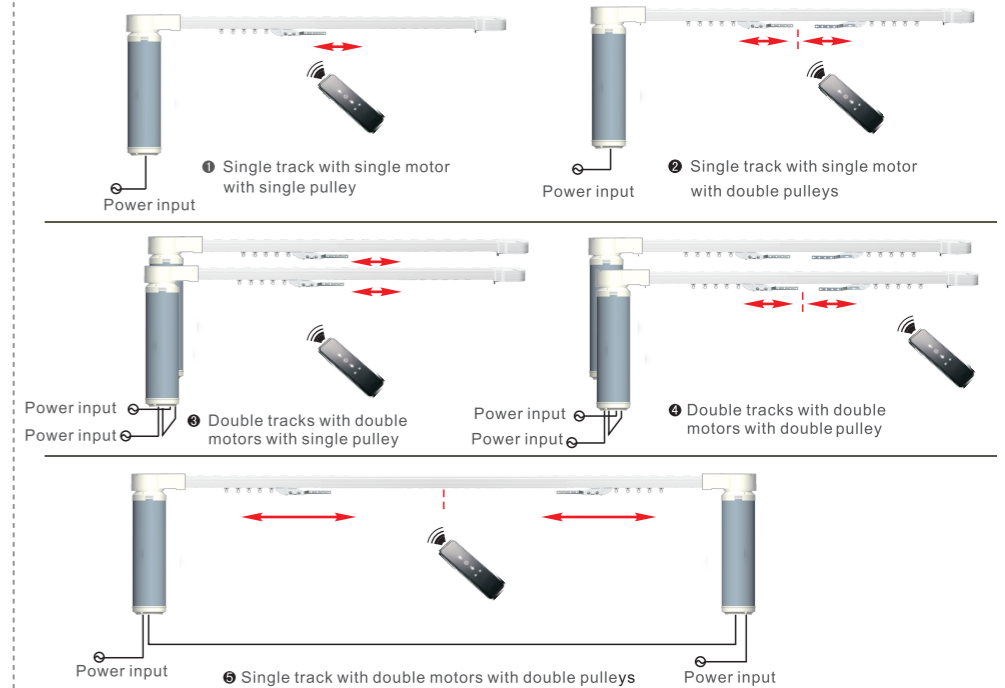
Loading diagram

Single motor loading diagram	2N.m			
	Fabric weight	Track length		
		4m	8m	12m
Track and pulley				
Single motor with double pulleys	90kg	82.5kg	75kg	
Single motor with single pulley	75kg	67.5kg	60kg	
Single motor with double pulleys (R500)	67.5kg	60kg	52.5kg	
Single motor with single pulley (R500)	60kg	52.5kg	45kg	
Single motor with double pulleys (R500)	52.5kg	45kg	37.5kg	
Single motor with single pulley (R500)	45kg	37.5kg	30kg	
Single motor with double pulleys (R3000)	46.5kg	31.5kg		
Single motor with single pulley (R3000)	31.5kg	24kg		

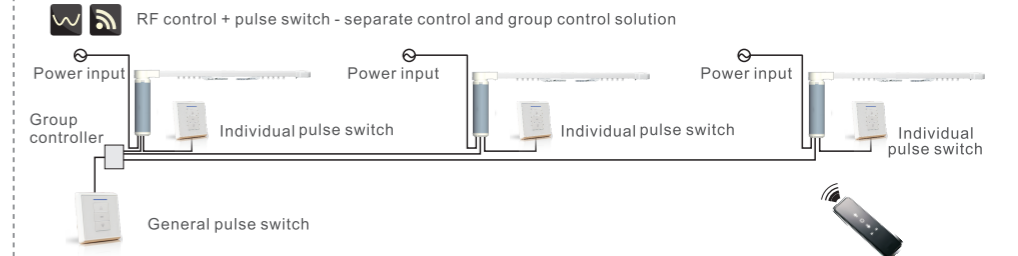
Fabric weight= weight per unit size(kg/m²) x size(m²) x fold rate
Remark: Max loading weight in diagrams does not include friction between fabric and curtain track

Curtain motor control modes

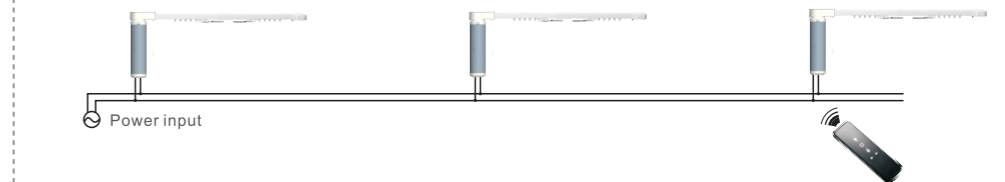
Single/double pulley



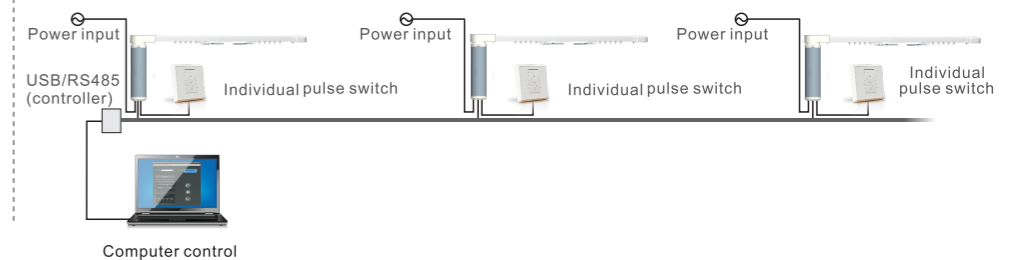
Control mode



RF separate control and group control solution

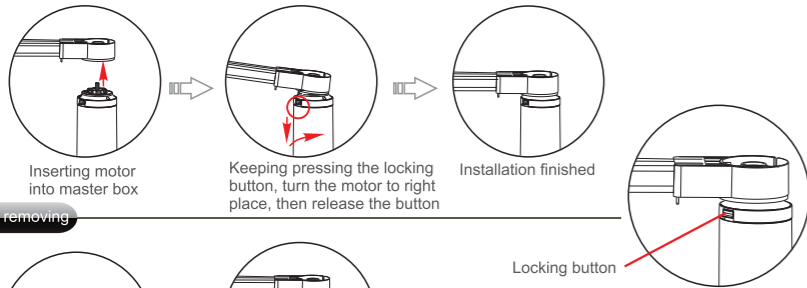


Computer control and group control solution

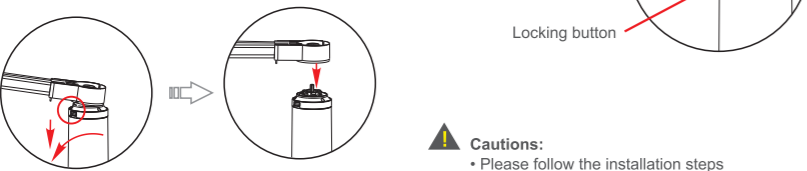


Installation

Motor installation

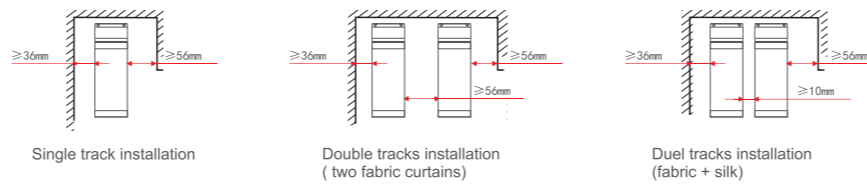


Motor removing

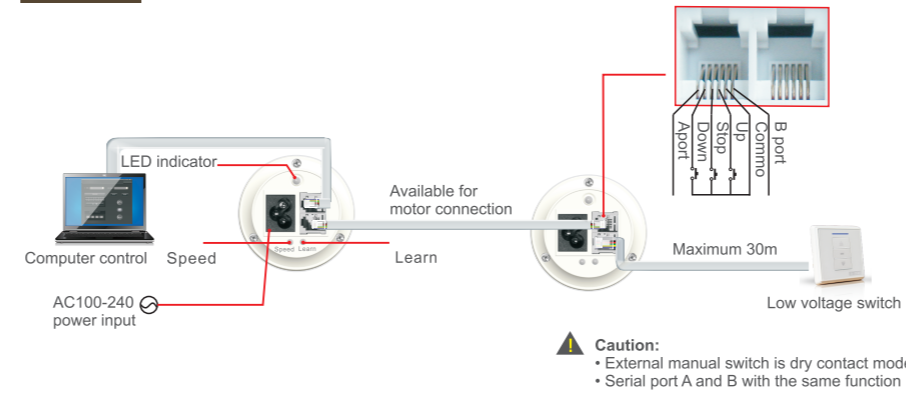


- Caution:**
- Please follow the installation steps
 - The ceiling must be strong enough to bear the whole weight of track, motor, fabric

Curtain box installation



Wiring



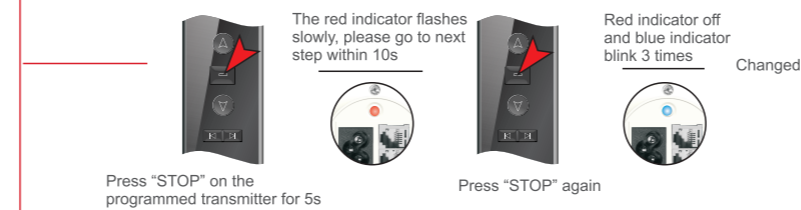
- Operation instruction**
- If the transmitter is multi-channel transmitter, please select channel firstly before operation
 - 0.5s delay for UP/DOWN operation transfer, motor continuous working time max 5min

1 Programming

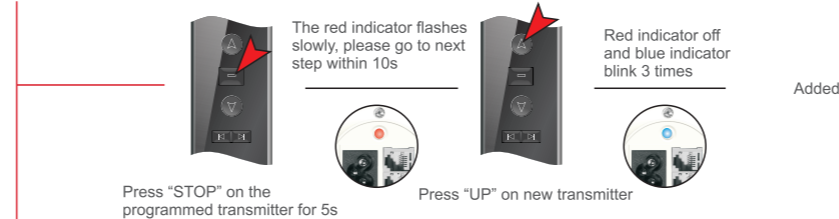


2 Direction changing

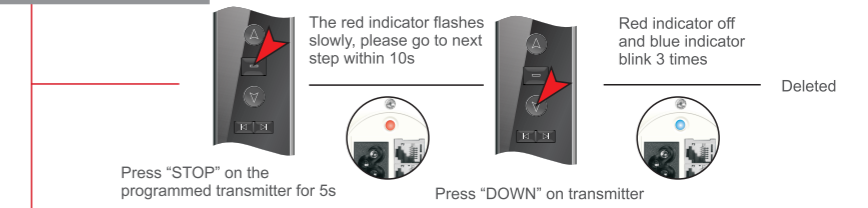
If motor moves in correct direction, it is not necessary to change, or it is needed.



3 Adding new transmitter

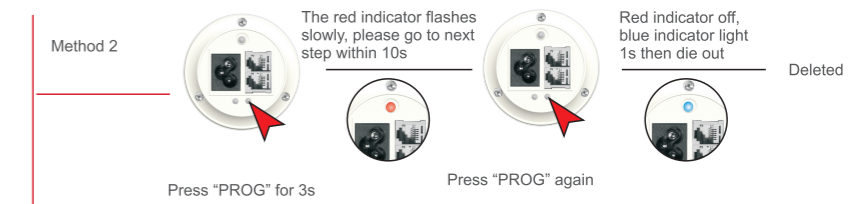


4 Single code deleting



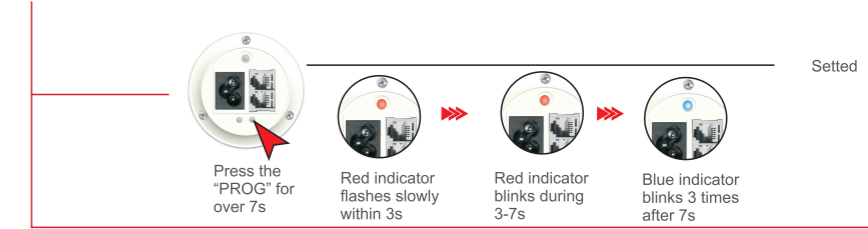
5 All codes deleting

Journey will be deleted after deleting all codes

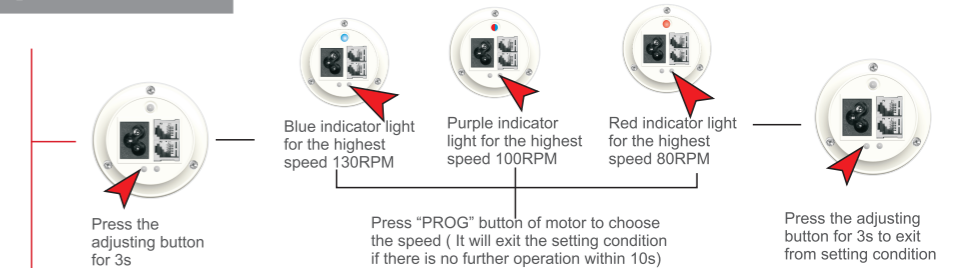


6 Light Touch-start function on/off transferring

Light Touch-start function instruction: lightly pull the fabric to 5cm, the curtain will be open or close automatically



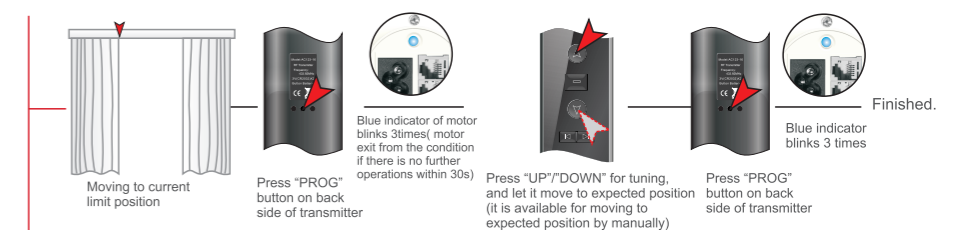
7 Highest speed setting



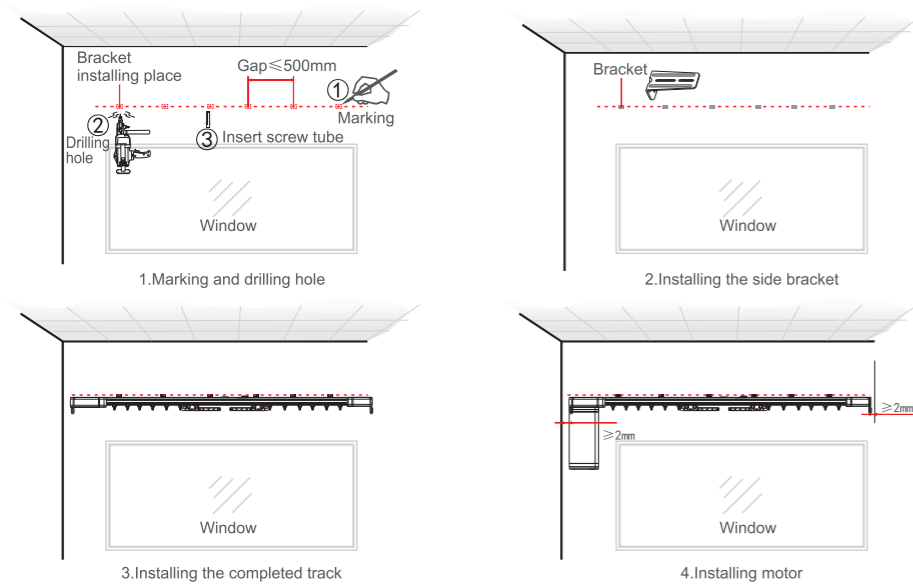
LED status instruction: Under the working condition, LED light for current highest running speed, red for 50-80RPM, purple for 81-100RPM, blue for 101-130RPM

8 Limit position fine tuning

After enter limit position fine tuning condition, motor has no light touch-start function, it is available for moving to expected position by manually.



Side bracket installation - wall application



Ceiling bracket installation - ceiling application

